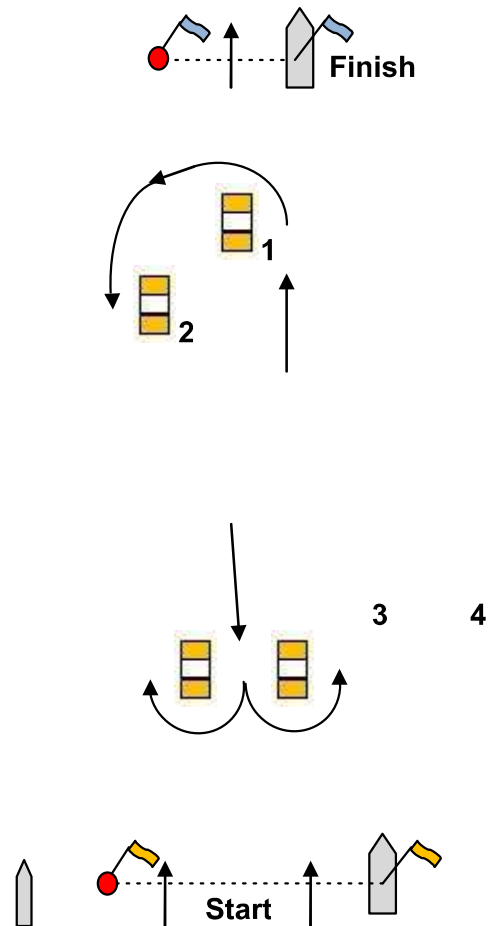





Addendum C: the courses

Upwind-downwind Course



Numeral pennant 2:  Start – 1 – 2 – Gate 3/4 – 1 – 2 – Gate 3/4 – Finish
(2 loops)

Numeral pennant 3:  Start – 1 – 2 – Gate 3/4 – 1 – 2 – Gate 3/4 –
1 – 2 – Gate 3/4 – Finish (3 loops)

All marks (except the gate) to be kept on port

Gate 3 – 4 can be situated downwind of the starting line

In this case the starting line will be removed after the start

MARKS :

Course marks 1, 2, 3 and 4 will be orange/white cylindrical buoys.

Port –end starting mark will be a red buoy with an orange flag.

Starboard –end starting mark will be the race committee signal boat with an orange flag.

The port –end finishing mark will be a red buoy with a blue flag.

Starboard–end finishing mark will be a race committee vessel with a blue flag.