



SAILING INSTRUCTIONS Open Dutch Championship

H-Boot class

Organised by **the Roermondse Roer- en Zeilvereniging “Maas en Roer”**

under the auspices of the Royal Netherlands Watersport Association (RNWA)

from October 8 to October 10 (inclusive) 2021

location: Zuidplas, Roermond, The Netherlands

The notation '[NP]' in a rule means that a boat may not protest another boat for breaking that rule. This changes RRS 60.1(a).

1. RULES

1.1* The event is governed by the rules as defined in *The Racing Rules of Sailing (RRS)*.

1.2 All competitors and support persons must adhere to the corona rules of the Dutch government for the for the rules see <https://www.government.nl/topics/coronavirus-covid-19>.

1.3 [DP] Competitors and support persons shall comply with any reasonable request from an event official. Failure to comply may be misconduct. - Reasonable actions by event officials to implement COVID-19 guidance, protocols or legislation, even if they later prove to have been unnecessary, are not improper actions or omissions.

2* CHANGES TO SAILING INSTRUCTIONS

2.1 Any change to the sailing instructions will be posted before 10.00 on the day it will take effect, except that any change to the schedule of races will be posted by 18.00 on the day before it will take effect.

3 COMMUNICATIONS WITH COMPETITORS

3.1 Notices to competitors will be posted on the official notice board located at the front of the clubhouse of R.R. & Z.V. “Maas en Roer”.

3.2 The race office is located in the clubhouse of R.R. & Z.V. “Maas en Roer”, +31622380701 of e-mail infopost@maasenroer.nl


4 [DP] CODE OF CONDUCT

4.1 Competitors and support persons shall comply with reasonable requests from race officials.

4.2 Competitors and support persons shall handle any equipment by the organizing authority with care, seamanship, in accordance with any instructions for its use and without interfering with its functionality.

5. SIGNALS MADE ASHORE

5.1 Signals made ashore will be displayed at the flag pole in front of the clubhouse of R.R. & Z.V. “Maas en Roer”.

5.2 When flag AP  is displayed ashore, ‘1 minute’ is replaced with ‘not less than 30 minutes’ in the race signal AP.



6 SCHEDULE OF RACES

6.1

Date	Number of races
October 8, 2021	3
October 9, 2021	4
October 10, 2021	2

6.2 The scheduled time of the warning signal for the first race each day is Friday October 8 12.55 hrs, Saturday October 9 10.25 hrs and Sunday October 10 10.25 hrs.

6.3 To alert boats that a race or sequence of races will begin soon, the orange starting line flag will be displayed with one sound at least five minutes before a warning signal is made.

6.4 On the last scheduled day of racing no warning signal will be made after 14.00 hrs.

7* CLASS FLAGS

7.1 The Class flags are: yellow board with a back H

8 RACING AREA

8.1 Attachment A shows the location of the regatta harbour and the racing area.

9 COURSES

9.1* The diagram(s) in SI Addendum B show the courses, the order in which marks are to be passed, and the side on which each mark is to be left. [

10 MARKS

10.1* Marks 1, 2, 3, 4S and 4P will be orange cylindrical buoys.

10.2* The starting and finishing marks will be:

Starting marks: a race committee vessel with an orange flag and a red buoy with an orange flag.

Finishing marks: a race committee vessel with a blue flag and a red buoy with a blue flag.

10.3 A race committee vessel signaling a change of a leg of the course is a mark as provided in SI 13.2.

10.4 The following marks are rounding marks: 1, 2, 3 and 4.

11 RESERVE

12 THE START

12.1 The starting line is between a staff displaying an orange flag on the signal vessel at the starboard end and the course side of the port-end starting mark.

12.2 Boats whose warning signal has not been made shall avoid the starting area during the starting sequence for other races.

12.3 A boat that does not start within 4 minutes after her starting signal will be scored Did Not Start without a hearing. This changes RRS A5.1 and A5.2.



13 CHANGE OF THE NEXT LEG OF THE COURSE

- 13.1 To change the next leg of the course, the race committee will move the original mark or the finishing line to a new position.

14* THE FINISH

- 14.1 The finishing line will be between a staff displaying a blue flag on the finishing mark at the starboard-end and the course side of the port-end finishing mark.

15 PENALTY SYSTEM

- 15.1 An national jury is appointed as provided in RRS 70.5.
- 15.2 RRS Appendix P applies.
- 15.3 RRS P2.3 does not apply and RRS P2.2 is changed so that it applies to any penalty after the first one.

16 TIME LIMITS [AND TARGET TIMES]

- 16.1 The Mark 1 Time Limit, Race Time Limit (see RRS 35), and the Finishing Window are shown in the table below.

Mark 1 Time Limit	Race Time Limit	Finishing Window
<i>No limit</i>	<i>No limit</i>	<i>Within 15 minutes after the first boat sails the course and finishes.</i>

- 16.2 The Finishing Window is the time for boats to finish after the first boat sails the course and finishes. Boats failing to finish within the Finishing Window, and not subsequently retiring, penalized or given redress, will be scored Time Limit Expired (TLE) without a hearing. A boat scored TLE shall be scored points for the finishing place one more than the points scored by the last boat that finished within the Finishing Window. This changes RRS 35, A5.1, A5.2 and A10.

17 HEARING REQUESTS

- 17.1 The protest time limit is 60 minutes after the last boat finishes the last race of the day or the race committee signals no more racing today, whichever is later. The time will be posted on the official notice board.
- 17.2 Hearing request forms are available from the race office at the clubhouse R.R.& Z.V. "Maas en Roer".
- 17.3 Notices will be posted no later than 30 minutes after the protest time limit to inform competitors of hearings in which they are parties or named as witnesses. Hearings will be held in the protest room, located at the clubhouse R.R.& Z.V. "Maas en Roer" beginning at the time posted.
- 17.4 A list of boats that have been penalized for breaking RRS 42 under Appendix P will be posted.

18 [NP][DP] SAFETY REGULATIONS

- 18.1 [DP] A boat that retires from a race shall notify the race committee at the first reasonable opportunity.



19 REPLACEMENT OF CREW OR EQUIPMENT

- 19.1*** Substitution of competitors will not be allowed without prior written approval of the race committee. Replacement of the responsible person is not allowed.

20 EQUIPMENT CHECKS AND MEASUREMENT CHECKS

- 20.1** A boat or equipment may be inspected at any time for compliance with the class rules, notice of race and sailing instructions.
- 20.2** [DP] When instructed by a race official on the water, a boat shall proceed to a designated area for inspection.

21 RESERVE

22 OFFICIAL VESSELS

- 22.1** Official vessels will be identified as follows: Maas en Roer flag.

23 [DP] SUPPORT TEAMS

- 23.1** Team leaders, coaches and other support persons shall stay outside areas where boats are racing from the time of the preparatory signal for the first start until all boats have finished or retired or the race committee signals a postponement, general recall or abandonment.

24 TRASH DISPOSAL

- 24.1** Trash may be placed aboard official boats.

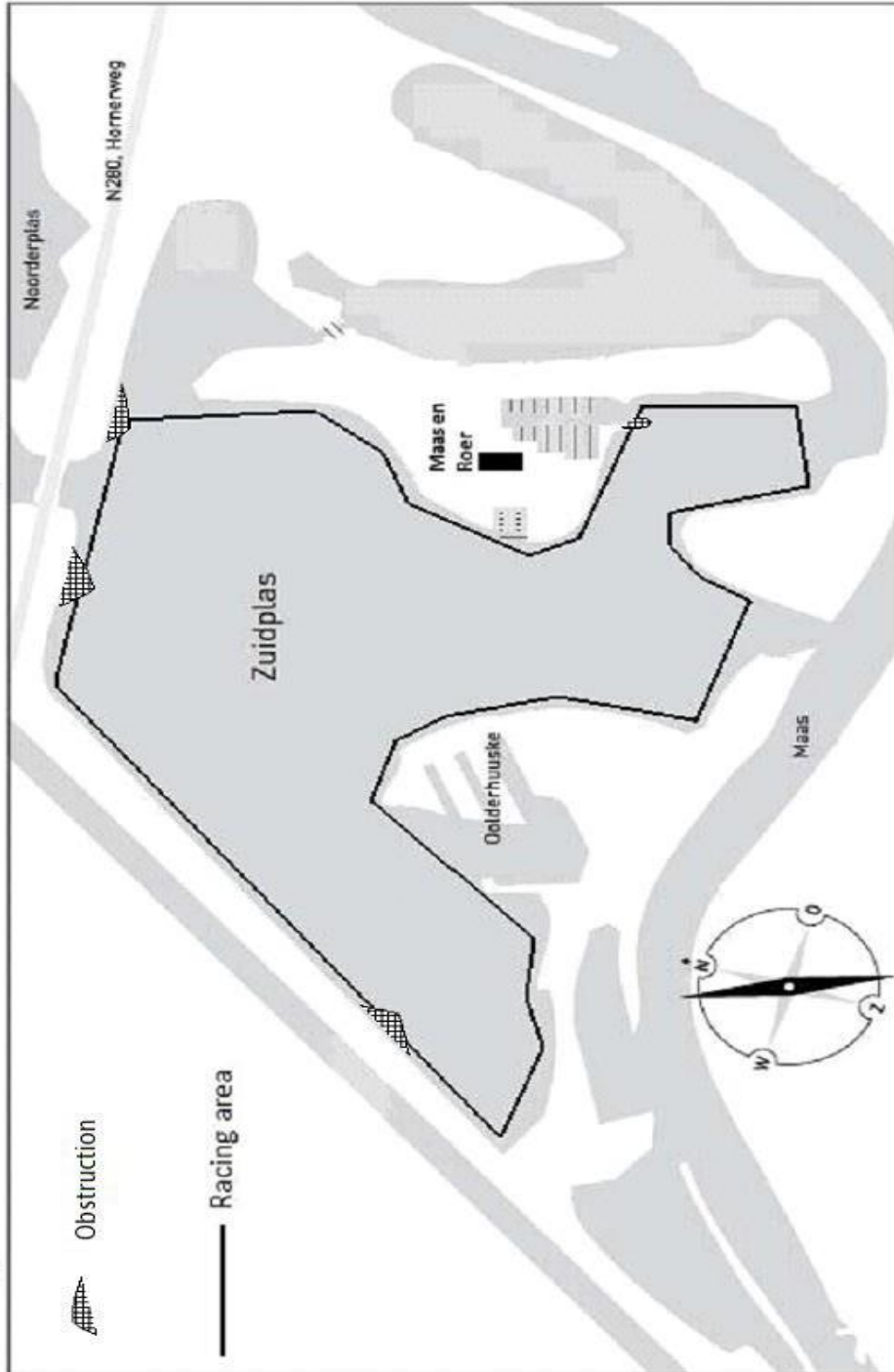
25 ORGANISATION

The race officer is : Urs Kahlen
The chairman of the protest committee is : Theo van Hilten
The second member of the protest committee is: Feike Hylarides

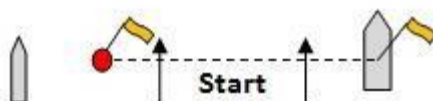
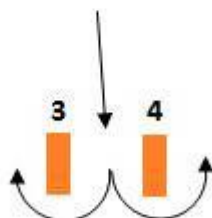
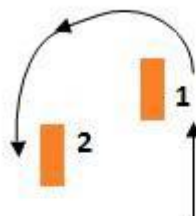
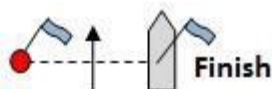


ADDENDUM A Location of the regatta harbour and te race area

Racing area Roermondse Roei- en Zeilvereniging **Maas en Roer**



ADDENDUM B The course Upwind-downwind course with spreader and downwind gate



No numeral pennant
(1 loop)

START – 1 – 2 – Gate 3/4 - Finish

Numeral pennant 2
(2 loops)



START – 1 – 2 – Gate 3/4 – 1 – 2 – Gate 3/4 - Finish

Numeral Pennant 3
(3 loops)



START – 1 – 2 – Gate 3/4 – 1 – 2 – Gate 3/4 – 1 – 2 – Gate 3/4 - Finish

All marks (except the gate) are to be left to port Gate 3 – 4 can be situated downwind of the starting area
In this case, after the start the starting marks will be obstructions

MARKS :

Course marks 1, 2, 3 and 4 will be orange cylindrical buoys. Port-end starting mark will be a red buoy with an orange flag.

Starboard-end starting mark will be the race committee signal boat with an orange flag. The port-end finishing mark will be a red buoy with a blue flag.

The starboard-end finishing mark will be a race committee vessel with a blue flag.